

# Radio-Sky Spectrograph

- Developed for the WCCRO
  - NASA DDF Grant
  - Free to all users

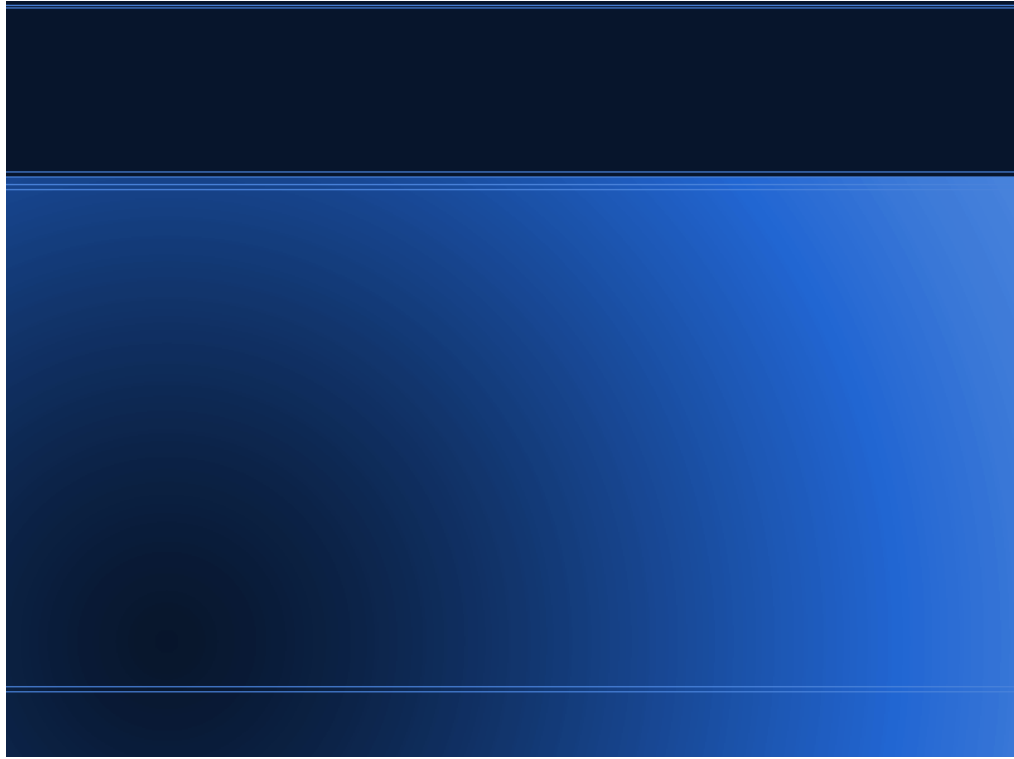
## Why?

- Display dimensions suitable for Jupiter and Solar spectra.
- Data size suitable for archiving.
- Real-time sharing.
- Compatibility with Radio-SkyPipe and Radio-Jupiter.

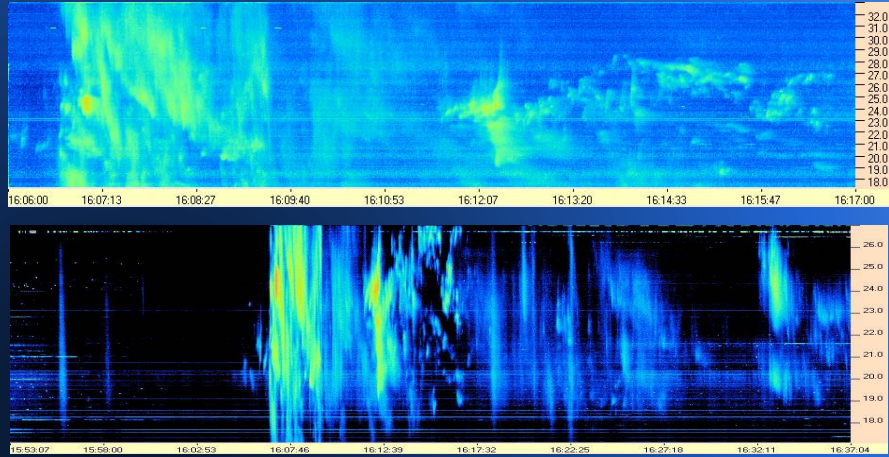
Why do we need another program to display spectrograms?

Some forethought and luck - we found that about 10 MHz viewed on 1 minute and 10 minute scale reveals important trends and features.

Saving undetected raw data not feasible. Too big!



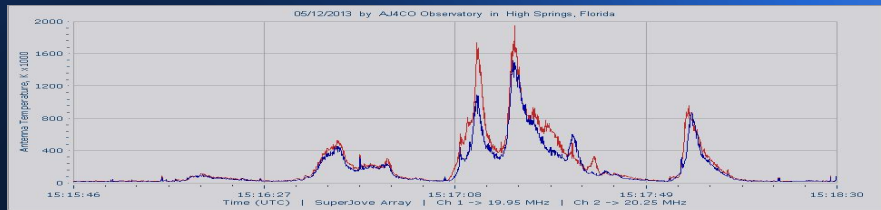
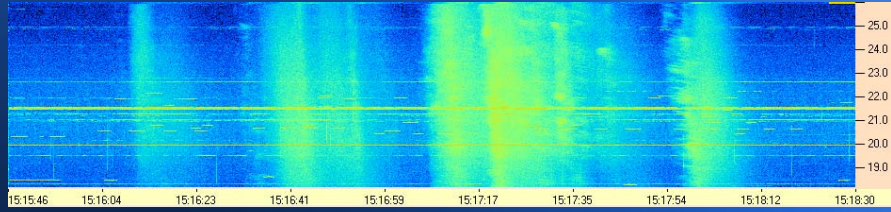
# Solar Spectrographs



Top spectrum collected by Dave  
Typinski

Bottom by Jim Brown

# Compared to Strip Chart



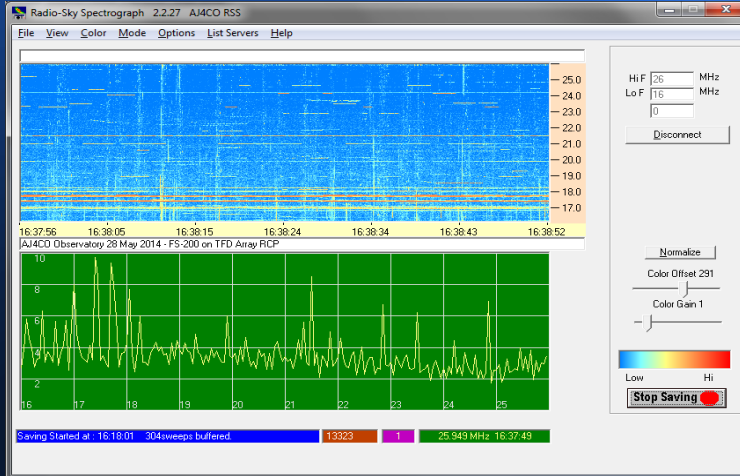
# Radios

- FS200
- FSX-4
- Dual Spectrograph
- SDR-14
- RTL-SDR

## Limitations

- 100 to 500 channels.
- Up to 16 bit depth (10 or 12 bit w/ FS hardware).
- Approx 10 spectra/sec.
- No timestamps (yet).
- Windows only (unless WINE works?).

# Scope view





## Radio-Jupiter Pro Connection

- Uses RJP schedule files for unattended file saving.
- RJP Info Server connection allows Sun/ Jupiter info to be updated in the chart banners.